



# Forage and Livestock eNews

*Updates and information from across the industry*

May 21, 2014 - Vol 6, Issue 5

## Articles In This Issue

SFC AGM & Tour

SK Forage Market Report

SFSDC 2014 Research Program

Lack of Research Funding  
Hurting Forage Industry

Alfalfa Weevil Season is Coming

Fertilizing Forages in SK

NPAW Poster Contest

News and Upcoming Events

[Join Our Mailing List!](#)

## Quick Links

[Saskatchewan Forage Council](#)

[Forage Industry News](#)

[Upcoming Events](#)

## Dear Coy,

Branding season is in full force in many parts of Saskatchewan. Neighbours, friends, and family all pitch in together to help get the important jobs done on these busy days.



There has and likely will continue to be criticism from certain groups about some of these practices done on branding days; however, this comes from a lack of understanding as to the importance of each of these practices. As cattle producers, we not only take pride in what we do, but we understand the land and the livestock better than anyone else. And, as such we take careful consideration into how we process our stock in order to ensure it is done in a humane and non-intrusive way. As we gather at the coming brandings, take the time to explain some of the practices to any new-comers; and, if we decide to post any photos from the day, ensure they portray what we do accurately and are accompanied with explanation of their purpose. These are opportunities to promote positive awareness for our industry and what we do, but we have to be careful to do it properly so as not to leave room for misinterpretation that seems to fuel the negative propaganda against it.

This issue of the *eNews* contains the SFC's Saskatchewan Forage Market Report for January 2014, an update from the SFSDC on their research program, announcements about the new southern conservation land management strategy in Saskatchewan, an article about the lack of funding for forage research, some links to Alfalfa Weevil information, a factsheet on fertilizing seeded forages, and the details of a poster contest. We also highlight some important upcoming industry events.

Please feel free to forward the *eNews* on to others you think may be interested in forage and livestock industry updates - signing up is as easy as clicking the 'Join Our Mailing List!' on the left. Your feedback and content ideas are always appreciated.

Your *Forage and Livestock eNews* Editor,  
**Coy Schellenberg, PAg**

*Image Credit: Calves at LO Branding - Shannon Schellenberg, Beechy, SK*

## Saskatchewan Forage Council AGM & Tour

*Saskatchewan Forage Council (SFC) - Event Update*  
By Leanne Thompson, Executive Director

The Saskatchewan Forage Council (SFC) is hosting their 26th Annual General Meeting (AGM) & Tour. It will be held **near Lashburn, Saskatchewan on Thursday, June 26, 2014**. Things will begin at 1:00pm at the Kerr Brothers Farm for the tour, followed by the AGM and supper. Registration is \$20/person and includes supper.

To view the agenda and event details, [click here](#).

For more information and to register, contact Leanne Thompson at 306.969.2666 or e-mail [office@saskforage.ca](mailto:office@saskforage.ca).

[Top of Page](#)

## Saskatchewan Forage Market Report

*Saskatchewan Forage Council (SFC) - Publication*

The updated *Saskatchewan Forage Market Report* is now available on the SFC website! This report provides a review of the 2013 forage season in Saskatchewan including production, environmental, and market conditions. It provides buyers and sellers price averages for a variety of forage types in Saskatchewan and surrounding jurisdictions during the 2013 growing season and into the winter as well as providing predictions on prices into the 2014 season.





Forage prices were mixed in late 2013 and early 2014, with variations in pricing based on quality and demand. High quality hay such as pure, second-cut alfalfa is in demand but there is little on offer, which has resulted in price increases since the January 2013 report. Although asking prices for mixed hay and grass hay have increased in the past year, buying and settled prices have declined, likely due in part to variable quality. Late forage harvest and rainfall during haying season have led to quality concerns in some areas. In fact, a survey conducted by the Saskatchewan Ministry of Agriculture indicates that energy levels in the 2013 hay crop are lower than anticipated.

To view the *Saskatchewan Forage Market Report - January 2014*, [click here](#).

*Image Credit: Alfalfa-Grass Hay Bales - Laura-Lie Schellenberg, Beechy, SK*

[Top of Page](#)

## SFSDC 2014 Research Program

*Saskatchewan Forage Seed Development Commission (SFSDC) - Research Update*  
By Ray McVicar, Executive Director

SFSDC will be working with the Northeast Agriculture Research Foundation (NARF) in 2014 to carry out a number of research projects to improve forage seed production. Most of the work will be done at the NARF research site on the Agriculture Canada Research Farm south of Melfort, SK. In 2013, 10 forage seed crops were established at the Melfort site so that research could continue on those crops in 2014.

A number of new projects will be started this year, including 5 projects that have been supported by the Agricultural Demonstration of Practices and Technologies (ADOPT) initiative under the Canada-Saskatchewan Growing Forward 2 bi-lateral agreement.



The ADOPT projects include:

- *Demonstrating the Proper Timing and Application of a Desiccant on Red Clover Seed Crops;* where water volumes, desiccant rates and timings will be varied to improve dry-down in red clover.

- *Management Options to Control Lesser Clover Leaf Weevil in Red Clover*; where a registered insecticide will be applied at different timing to improve red clover seed yields.
- *Evaluating the Placement of Companion Crops in Forage Seed Production*; where forage seed crop establishment will be compared under alternative planting methods with-or-without a companion crop.
- *Controlling Noxious Weeds and Improving Seed Quality in Established Forage Legume Seed Crops*, and *Controlling Noxious Weeds and Improving Seed Quality in Established Forage Grass Seed Crops*; where registered herbicides will be applied on 10 established crops to control hard-to-kill weeds and reduce the presence of restricted weed seeds in the sample.

Additional projects will be carried out with funding from SFSDC and industry partners.

- Encouraging yield results were achieved last year with the application of foliar copper fertilizer treatments at 3 of 4 established forage grass seed sites, so an expanded project will be done in 2014.
- SFSDC and NARF plan to continue the Minor Use herbicide program on a number of established forage seed crops.

For more information about past research projects, please check out the SFSDC website at: [www.skforageseeddc.com](http://www.skforageseeddc.com) and look under **Research**.

*Image Credit: SFSDC & NARF Signs 2013 - Saskatchewan Forage Seed Development Commission*

[Top of Page](#)

## Committee Told Lack of Research Funding Hurting Crucial Forage Industry

*iPolitics - Article (May 13, 2014)*

*By Kelsey Johnson*

Agriculture stakeholders continue to plead for more publicly funded long term research, as the House agriculture committee wraps up its study on innovation and competitiveness in Canadian agriculture.

The latest entreaty came Monday, in testimony from the Canadian Forage and Grasslands Association (CFGGA), who told MPs the decline in research dollars is hurting their industry.

"Dramatic" drops in research funding for forage means its associated research can't keep up with popular annual crops like canola, corn and soybeans, "putting the livestock sector at risk," said the group's chairman, Doug Wray.

Forages are perennial plants (like pastures, baled hay and alfalfa pellets) consumed by livestock. They are the largest cultivated crop in Canada, at 13 million hectares or 39 per cent of cultivated land. Another 15 million hectares of native or natural pastureland in Canada is dedicated forage.

The forage industry, valued at \$5.1 billion, is essential to the Canadian livestock industry. Eighty per cent of Canada's beef production and 60 per cent of a dairy cow's diet depend on forages.

The plants also help with soil conservation. Farmers often include them in their crop rotations to improve soil structure, control erosion, and add nitrogen - crucial to plant growth.

To read the complete *iPolitics Article*, [click here](#).

[Top of Page](#)

## Alfalfa Weevil Season is Coming Quick - Refresh Your Information

*Saskatchewan Ministry of Agriculture - Stay Connected (May 13, 2014)*

A recorded webinar on alfalfa weevil monitoring and management is posted at the following link:  
<https://www2.gotomeeting.com/register/256271218>

There is also an alfalfa weevil web video posted onto the ministry website at the following link:  
<http://www.agriculture.gov.sk.ca/WebVideo-AlfalfaWeevil>

And there is an alfalfa weevil factsheet: <http://www.agriculture.gov.sk.ca/Alfalfa-Weevil>

[Top of Page](#)

## Fertilizing Seeded Forages in Saskatchewan

*Saskatchewan Ministry of Agriculture - Factsheet (May 13, 2014)*

Seeded forages can be highly productive, but this productivity gradually declines as the stand ages. Research has indicated that fertilization can rejuvenate or revitalize a forage stand. But before you decide to fertilize, you need to assess the current status of your stand. Some important questions to ask are:

1. To what degree has the stand degraded with age? At least half of the remaining species should be desirable for forage production. Pastures or hay stands in good to excellent condition generally respond to fertilizer better than pastures with weeds or less productive grasses.
2. Is it a mixed stand? The amount of legumes such as alfalfa will affect the amount of fertilizer required.
3. Have you soil tested? Yield response to nutrients will vary from field to field. Coarse sands and gravelly soils will generally give a lower yield response to fertilizer than finer, sandy soils, loams or clays. Soil testing is an inexpensive way to tailor the nutrient application to the particular needs of the stand.
4. Does it make economic sense to fertilize? Several economic studies have shown that higher yields alone do not necessarily translate into lower costs or higher profit so it is essential to understand the effect of fertilization on unit costs of production.

To read the complete *SK Ministry of Ag Factsheet*, [click here](#).

[Top of Page](#)

## NPAW Poster Contest

## Saskatchewan Prairie Conservation Action Plan (SK PCAP) - Poster Contest (2014)

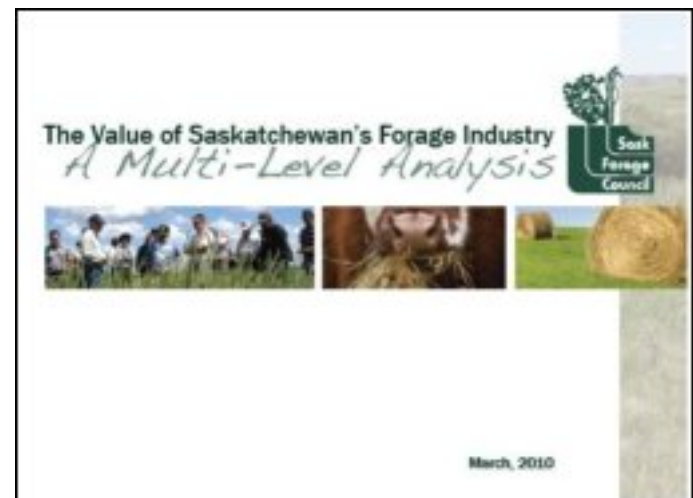
Celebrate Native Prairie Appreciation Week (NPAW), and draw a poster about native prairie to win a prize! SK PCAP is holding another Poster Contest for kids ages 5 to 16.

To view the Poster Contest details and criteria, [click here](#).

[Top of Page](#)

## The Value of Saskatchewan's Forage Industry .....

To view the *Saskatchewan Forage Industry Analysis* Report, [click here](#).



[Top of Page](#)

## News and Upcoming Events

### **Back to the Field**

**May 27 & 28, 2014**

**Lumsden, SK**

The Prairie Parkland Chapter of the Society for Range Management is offering this spring workshop to help you get back to the field. It will focus on plant identification, ecological assessment techniques, and grazing considerations for riparian paddocks. The meeting location is Centennial Hall (Basement)-#40, 3rd Ave, Lumsden, SK. Sign-in and registration begins at 8:30am on the 27th and things wrap up around 4:00pm on the 28th.

To view the agenda and event details, [click here](#).

For more info, contact Nadia Mori at 306.946.3219.

---

### **Ergot-Fusarium Symposium**

**June 12, 2014**

**Saskatoon, SK**

In response to increasing concerns about mycotoxins in the food and feed supply system and the risk associated with handling and consumption, we have organized this symposium to address "Emerging Issues with Ergot and Fusarium". One recent estimate of the cost of mycotoxins to the crop industry value chain is \$5 billion annually for North America. If you produce or eat food, this meeting has relevance to you! The event is being held in room 2302 in the Western College of Veterinary Medicine at the University of Saskatchewan in Saskatoon. Registration begins at 8:00



am.

To view the event brochure, agenda, and registration form, [click here](#).

For more info, phone 306.249.3512.

---

### **NPAW Prairie Parkland Chapter Annual Tour**

**June 19 & 20, 2014**

**Val Marie, SK**

This is the 16th Annual Society for Range Management - Prairie Parkland Chapter Annual Tour, and it is held in conjunction with Saskatchewan's 16th Annual ***Native Prairie Appreciation Week*** (NPAW, June 16-22, 2014). This two-day event is themed, "From Roots to Shoots" and focuses on involving the whole family. Kids ages 6-15 are welcome to come and participate, as well as everyone older. There are daycare options arranged for children under age 6. Please register by June 16th.

To view the event poster with agenda and registration details, [click here](#).

For more info, contact Nadia Mori at 306-946-3219 or [nadia.mori@gov.sk.ca](mailto:nadia.mori@gov.sk.ca).

---

### **Western Beef Development Centre Annual Field Day**

**June 24, 2014**

**Lanigan, SK**

The Annual Field Day will be held at the Termuende Research Ranch located near Lanigan, SK. Visit [www.wbdc.sk.ca](http://www.wbdc.sk.ca) for information to come.

For more information, contact Brenda at 306.682.3139.

---

### **2014 SFC Annual Tour & AGM**

**June 26, 2014**

**Lashburn, SK**

The Saskatchewan Forage Council (SFC) is hosting our 26th Annual General Meeting (AGM) & Tour. It will be held **near Lashburn, Saskatchewan** on **Thursday, June 26, 2014**. As in past years, we will be touring local sites and talking with producers about forage management issues and solutions on their operations. The AGM will follow the tour as well as presentation of the Forage Industry Innovation Award. Things will begin at 1:00pm at the Kerr Brothers Farm for the tour, followed by the AGM and supper. Registration is \$20/person and includes supper.

To view event details and the agenda, [click here](#).

For more info and to register, contact Leanne Thompson at 306.969.2666 or [office@saskforage.ca](mailto:office@saskforage.ca).

---

[Top of Page](#)

## **Saskatchewan Forage Council Membership**

### **Be Sure Your Voice in the Forage Industry Counts!**

- Incorporated under *The Co-operatives Act*, a membership fee for the SFC is a one-time cost of \$25.00;
- The SFC has worked in the province on behalf of **ALL** forage industry stakeholders (and that's a very extensive and diverse group) for more than 20 years;
- If you are involved with production, management, protection, harvesting, storage,

- utilization or marketing of forage products, the SFC wants your involvement and input;
- The SFC is committed to placing a focus and awareness on the importance of forages in our province.

*The SFC at a glance...*

With a mandate to enhance the province's forage and grassland industry, the Saskatchewan Forage Council (SFC) strives to partner with all sectors of the industry - producers, industry organizations and companies, government and university.

Formed in 1988, our objectives are focused on the development and dissemination of information related to the production and utilization of all forage resources, prioritization of forage research and collaboration with governments to develop and implement effective policies and programs as they relate to forage production and marketing.



To learn more about becoming a member [Click Here](#).

[Top of Page](#)



***Forage and Livestock eNews*** is published by the Saskatchewan Forage Council (SFC).  
*Opinions and information are provided by the authors and publication does not imply endorsement by the SFC.*

***Financial support for the Forage and Livestock eNews has been provided in part by the Saskatchewan Forage Seed Development Commission.***



We welcome questions about article submission or to find out more about sponsorship,  
*please contact the Saskatchewan Forage Council at:*

*Email: [office@saskforage.ca](mailto:office@saskforage.ca)*

*Phone: 306.969.2666*

**The Saskatchewan Forage Council Gratefully Acknowledges funding for our 'Facilitating Forage Initiatives in Saskatchewan' project through the Saskatchewan Cattlemen's Association Saskatchewan Beef Industry Development Fund:**



The Saskatchewan Forage Council recognizes our Annual Supporters:



[Forward email](#)



Try it FREE today.

This email was sent to coyschellenberg@gmail.com by [office@saskforage.ca](mailto:office@saskforage.ca) | [Update Profile/Email Address](#) | Instant removal with [SafeUnsubscribe](#)™ | [Privacy Policy](#).

Saskatchewan Forage Council | PO Box 87 | Ceylon | SK | S0C 0T0 | Canada