



# Forage and Livestock eNews

*Updates and information from across the industry*

March 17, 2014 - Vol 6, Issue 3

## Articles In This Issue

Copper Fertility on Forage Seed Grasses

SFC to Work with CFGA to Deliver BMP Project

2013 SK Forage Quality Survey

Alfalfa Hay Exports Soften

Nutrient Composition and Protein Degradation Characteristics of Alfalfa

The Value of Saskatchewan's Forage Industry

News and Upcoming Events

Become a Saskatchewan Forage Council Member

[Join Our Mailing List!](#)

## Quick Links

[Saskatchewan Forage Council](#)

[Forage Industry News](#)

[Upcoming Events](#)

## Dear Coy,

Only two weeks ago, wind chills reached -57 degrees Celsius in some parts of Saskatchewan. The cold weather was followed up by snow fall in certain areas, as well as a welcomed warm up in temperatures. This warm up has hinted at the emergence of spring and the changing of seasons. It is such a beautiful thing to see water running in the ditches this time of year.

With a winter that has been cold and long, it brings relief to producers, livestock, and the landscape. It fosters a joy that spring has finally sprung, and a hope that warmer weather will stick around. With calving season underway on some operations and soon to begin on others, continued cooperation from the weather is high on the list of desirables.



With a winter that has been cold and long, it brings relief to producers, livestock, and the landscape. It fosters a joy that spring has finally sprung, and a hope that warmer weather will stick around. With calving season underway on some operations and soon to begin on others, continued cooperation from the weather is high on the list of desirables.

This issue of the *eNews* focuses on a SFSDC copper fertility of forage seed project, a CFGA environment committee update, the Sask Ministry of Agriculture's 2013 forage quality survey, an article about hay exports to the United Arab Emirates, and a research project looking at rumen protein degradation in alfalfa.

Please feel free to forward the *eNews* on to others you think may be interested in forage and livestock industry updates -

signing up is as easy as clicking the 'Join Our Mailing List!' on the left. Your feedback and content ideas are always appreciated.

Your *Forage and Livestock eNews* Editor,  
**Coy Schellenberg, PAg**

*Image Credit: Snow 'Cowboy' - Laura-Lie Schellenberg, Beechy, SK*

## Copper Fertility on Forage Seed Grasses

*Saskatchewan Forage Seed Development Commission (SFSDC) - Project Update*  
By Ray McVicar, Executive Director

In June 2013, 0.22 lb/ac of foliar EDTA chelated copper was applied at the flag leaf to established timothy (3 locations) and hybrid bromegrass (1 location) on replicated miniplots in the Choiceland, Nipawin, and White Fox SK regions. At Site 1 (field with a history of copper fertilizer application) seed yield of timothy did not increase when copper was applied. At two other sites copper fertilization increased seed yield of timothy by 20 and 29 per cent. At Site 4 seed yield of hybrid bromegrass increased by 30 per cent. The three sites where copper increased the yield had no known history of copper application. Statistical analyses of individual sites did not reveal significant differences; however a combined analysis of the three sites with no known history of copper fertilization indicated that the copper response was significant.



These results suggest that low seed yield with forage grasses may reflect copper deficiencies. Forage seed growers who suspect copper deficiencies should consider applying copper to test strips in their fields to verify both the presence and magnitude of responses.

Based on 9.5 per cent EDTA chelated copper priced at \$9/L, the cost of 0.22 lb/ac would be about \$9.50/ac. With typical yields of 250 lb/ac for hybrid bromegrass and 300 lb/ac for timothy, the resulting yield increases in three of these sites provided positive economic returns.

These results show that application of foliar EDTA chelated copper at relatively low rates can be effective at correcting deficiencies. Applying foliar copper to miniplots and comparing yield to adjacent untreated areas is an effective way of identifying where copper applications may be economic.

SFSDC wishes to acknowledge the efforts and expertise of Stu Brandt, Dr. Sukhdev Malhi and the Northeast Agriculture Research Foundation as well as Clayton Myhre, Pickseed Canada in carrying out this project. For more information about SFSDC and research results, please check our website at: [www.skforageseeddc.com](http://www.skforageseeddc.com)

*Image Credit: Hybrid bromegrass miniplots 2013 - Saskatchewan Ministry of Agriculture*

The Canadian Forage & Grassland Association (CFGA) Environmental Committee in cooperation with the provincial forage associations in Manitoba, Saskatchewan and Alberta was successful in obtaining funding from the Commission for Environmental Cooperation (CEC) for the implementation and promotion of Beneficial Management Practices (BMP's) on the Prairies. The CEC facilitates collaboration and public participation to foster conservation, protection and enhancement of the North American environment for the benefit of present and future generations, in the context of increasing economic trade and social links among Canada, Mexico and the United States. The CFGA was awarded \$85,000 by the CEC towards this project, which will take place over the next year in all three Prairie Provinces.

The Saskatchewan Forage Council (SFC) will work with the CFGA to deliver this project in Saskatchewan. Executive Director, Leanne Thompson indicates "We will be looking to work with land managers interested in implementing BMP's on rangeland. This will potentially include a wide variety of practices all with the end goal of maintaining the health and biodiversity of rangeland". Details on the project including timelines are currently under development in partnership with the CFGA and CEC. Updates will be placed on the SFC website [www.saskforage.ca](http://www.saskforage.ca) as more information becomes available.

For more information on the CFGA's Environment Committee, [click here](#).

[Top of Page](#)

## 2013 Saskatchewan Forage Quality Survey

*Saskatchewan Ministry of Agriculture - Fact Sheet (March 2014)*

During the fall of 2013, regional forage and livestock specialists collected more than 200 samples of forage harvested in 2013 across the province.

The purposes were to:

- a. Gather forage quality data for the upcoming winter feeding period;
- b. Demonstrate the typical wide range in forage quality;
- c. Provide example balanced rations based on feed quality; and
- d. Compare the daily costs of the example rations.

The samples collected were grouped as follows:

- Alfalfa Hay (31 first cut)
- Alfalfa/Grass Hay (126)
- Grass Hay (17)
- Cereal Greenfeed Hay (24)

The chemical analysis of the forages was evaluated against their ability to meet the energy requirements of cows six months pregnant in -25 C. Thirty-eight per cent of all the forages sampled met this requirement. Only 29 per cent of the alfalfa, and alfalfa grass hays provided adequate energy, while 77 per cent of the grass hays and 75 per cent of the green feed did so. As cows enter the final month of pregnancy and nutrient requirements increase, only five per cent of

all the sampled forages would provide adequate energy.

To view the *SK Ministry of Ag Fact Sheet*, [click here](#) .

[Top of Page](#)

## Alfalfa Hay Exports Soften

*eHay Weekly - Article (March 4, 2014)*

*By Fae Holin, Editor, Hay & Forage Grower*

U.S. exporters may see fewer alfalfa hay sales to the United Arab Emirates (UAE) in 2014. The UAE bought enough hay last year that it will scale back purchases, hay export companies have told Seth Hoyt, market analyst and author of *The Hoyt Report* weekly newsletter.

"UAE imported so much hay that it has a logjam of supplies over there right now," said Hoyt quoting export sources.

Alfalfa hay shipments have also slowed to China from the West Coast, Hoyt was told. That was confirmed by U.S. Department of Commerce data; alfalfa hay exports to China dropped by 15% in December 2013 vs November. Alfalfa hay exports to China should pick up in coming months. Some exporters think that the West Coast will see a smaller year-to-year increase in alfalfa hay exports to China in 2014 as compared to the increase in 2013 vs. 2012 totals. This is mainly due to competition from dairies in the West, particularly those in California.

To read the complete *eHay Weekly Article*, [click here](#).

[Top of Page](#)

## Nutrient Composition and Degradation Characteristics of Anthocyanidin Containing Alfalfa

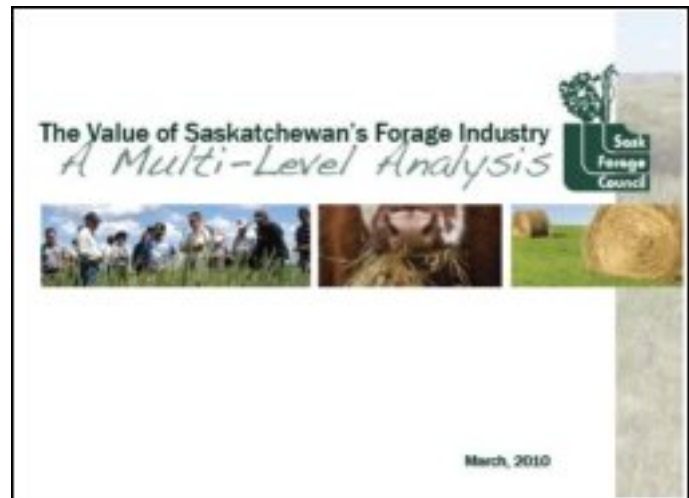
*By Professor Dr Peiqiang Yu, Saskatchewan Ministry of Agriculture Strategic Research Chair in Feed Research & Development*

Alfalfa (*Medicago sativa* L.) is rich in nutrients, but utilizing its maximum nutrient potential with ruminants is restricted due to rapid rumen degradation of protein causing wastage and digestive disorders. This may be prevented if adequate protein binding proanthocyanidin is present in the aerial part of the alfalfa. The Lc gene and C1 genes synthesise bHLH and MYB transcription factors associated with flavonoid pathway regulation. The objective of this study was to investigate the influence of single gene (Lc and C1) and double gene (Lc x C1) transformation on chemical composition and degradation characteristics of protein and carbohydrate comparing to non-transgenic (NT) parental plants.

To read the complete *Research Article*, [click here](#).

## The Value of Saskatchewan's Forage Industry .....

To view the *Saskatchewan Forage Industry Analysis* Report, [click here](#).



[Top of Page](#)

## News and Upcoming Events

### Corn Planter Clinic

**March 19, 2014**

**Regina, SK**

DuPont Pioneer and your local Sales representative would like to invite you to join us at a Corn Planter Clinic brought to you by DuPont Pioneer March 19th. This event will be held at Banner Hall - Regina Exhibition Grounds; Regina, SK. Registration Starts at 9:00am. Come early and visit with various implement dealers and your DuPont Pioneer Staff. Please RSVP by March 5th with Glenda Clezy.

To view the event flyer and agenda, [click here](#).

For more information, contact Glenda Clezy at [glenda.clezy@pioneer.com](mailto:glenda.clezy@pioneer.com).

---

[Top of Page](#)

## Saskatchewan Forage Council Membership

### **Be Sure Your Voice in the Forage Industry Counts!**

- Incorporated under *The Co-operatives Act*, a membership fee for the SFC is a one-time cost of \$25.00;
- The SFC has worked in the province on behalf of **ALL** forage industry stakeholders (and that's a very extensive and diverse group) for more than 20 years;
- If you are involved with production, management, protection, harvesting, storage, utilization or marketing of forage products, the SFC wants your involvement and input;
- The SFC is committed to placing a focus and awareness on the importance of forages in our province.

With a mandate to enhance the province's forage and grassland industry, the Saskatchewan Forage Council (SFC) strives to partner with all sectors of the industry - producers, industry organizations and companies, government and university.



Formed in 1988, our objectives are focused on the development and dissemination of information related to the production and utilization of all forage resources, prioritization of forage research and collaboration with governments to develop and implement effective policies and programs as they relate to forage production and marketing.

To learn more about becoming a member [Click Here](#).

[Top of Page](#)



***Forage and Livestock eNews*** is published by the Saskatchewan Forage Council (SFC).  
*Opinions and information are provided by the authors and publication does not imply endorsement by the SFC.*

***Financial support for the Forage and Livestock eNews has been provided in part by the Saskatchewan Forage Seed Development Commission.***



We welcome questions about article submission or to find out more about sponsorship,  
*please contact the Saskatchewan Forage Council at:*

*Email: [office@saskforage.ca](mailto:office@saskforage.ca)*

*Phone: 306.969.2666*

**The Saskatchewan Forage Council Gratefully Acknowledges funding for our 'Facilitating Forage Initiatives in Saskatchewan' project through the Saskatchewan Cattlemen's Association Saskatchewan Beef Industry Development Fund:**



The Saskatchewan Forage Council recognizes our Annual Supporters:



[Forward email](#)



Try it FREE today.

This email was sent to coyschellenberg@gmail.com by [office@saskforage.ca](mailto:office@saskforage.ca) | [Update Profile/Email Address](#) | Instant removal with [SafeUnsubscribe™](#) | [Privacy Policy](#).

Saskatchewan Forage Council | PO Box 87 | Ceylon | SK | S0C 0T0 | Canada