



# Forage and Livestock eNews

*Updates and information from across the industry*

June 16, 2014 - Vol 6, Issue 6

## Articles In This Issue

SFC AGM & Tour

SK Hay and Pasture Report

SFC Reclamation Workshops

Rangeland BMP Funding

Forage Crop Breeding  
Appointment

Weeds in Forage Stands

SK PCAP New Commitment

The Value of Saskatchewan's  
Forage Industry

News and Upcoming Events

Become a Saskatchewan Forage  
Council Member

[Join Our Mailing List!](#)

## Quick Links

[Saskatchewan Forage Council](#)

[Forage Industry News](#)

[Upcoming Events](#)

## Dear Coy,

As we move through the month of June, it appears that there should be a decent hay crop in many areas of the province. The moisture has been coming and with a couple more timely rains, things should be set. There has been talk



of winter killed alfalfa in some areas, with high percentages in southern Alberta, so we may have to be cognizant of hay supplies outside our local areas. Cows and calves and yearlings have been moving out to pasture and summer grazing plans are being implemented.

This issue of the *eNews* contains information on the upcoming SFC Annual Tour and AGM, the recent issue of the SK Hay and Pasture Report, some upcoming reclamation workshops, funding available for rangeland BMP projects, the recent appointment to forage crop breeding, scouting for weeds in forage stands, and an announcement from SK PCAP. Summer is always jam packed with field workshops and tours, so read on for more information on upcoming industry events.

This will be my last issue as Editor of the *eNews*. I want to thank the Saskatchewan Forage Council for the opportunity of doing it for the last 5 years. I know that I will remain very connected to the forage and livestock industry and the SFC,

and I am very excited for where the industry is going!

Please feel free to forward the *eNews* on to others you think may be interested in forage and livestock industry updates - signing up is as easy as clicking the 'Join Our Mailing List!' on the left. Your feedback and content ideas are always appreciated.

Your *Forage and Livestock eNews* Editor,  
**Coy Schellenberg, PAg**

*Image Credit: Horses at Dawn - Laura-Lie Schellenberg, Beechy, SK*

## Saskatchewan Forage Council AGM & Tour

### *Saskatchewan Forage Council (SFC) - Event*

The Saskatchewan Forage Council (SFC) is hosting their 26th Annual General Meeting (AGM) & Tour. It will be held **near Lashburn, Saskatchewan** on **Thursday, June 26, 2014**. Things will begin at 1:00pm at the Kerr Brothers Farm for the tour, followed by the AGM and supper. Registration is \$20/person and includes supper.

To view the agenda and event details, [click here](#).

For more information and to register, contact Leanne Thompson at 306.969.2666 or e-mail [office@saskforage.ca](mailto:office@saskforage.ca).

[Top of Page](#)

## Saskatchewan Hay and Pasture Report - May 2014

### *Saskatchewan Forage Council (SFC) - Publication*

Welcome to the first edition of the 2014 Hay and Pasture Report. Now in its 15th season, this report will continue to provide current forage industry production and marketing information.

This edition of the Report contains articles about sainfoin for silage, comparison of corn grown on dryland versus under irrigation, herbicide options to control absinth in pastures and upcoming Saskatchewan Forage Council projects and events. You'll also find forage market information and the Saskatchewan Agriculture Crop Report in this and every edition.

To view the *Saskatchewan Hay and Pasture Report - May 2014*, [click here](#).

[Top of Page](#)

## SFC Reclamation Workshops

### **Forages in the Field Workshops**

**June 17, 2014 - Kindersley area**

**June 24, 2014 - Kisbey area**

The Saskatchewan Forage Council is pleased to be offering these two workshops designed with the environmental and reclamation practitioner in mind. Workshops will focus on native plant, wetland plant and weed ID as well as covering the agronomics of re-seeding forages.

To view the event brochure, agenda, and registration form, [click here](#).

For more info, contact the SK Forage Council at 306.969.2666 or [office@saskforage.ca](mailto:office@saskforage.ca).

[Top of Page](#)

## **Funding Available for Rangeland BMP's**

### *Saskatchewan Forage Council (SFC) - Projects*

The Saskatchewan Forage Council (SFC) is looking for producers who are interested in implementing Best Management Practices (BMP's) on native rangeland. In cooperation with the Canadian Forage and Grassland Association and funding from the Commission for Environmental Cooperation, the SFC will be able to provide financial assistance for a limited number of projects whose end goal is the conservation of native prairie. If you are planning on implementing BMP's on native prairie this summer (2014) and are interested in working with the SFC, please contact Executive Director, Leanne Thompson at (306) 969-2666 or [office@saskforage.ca](mailto:office@saskforage.ca) to see if your project may be a fit.

[Top of Page](#)

## **Dr. Biligetü Appointed to Forage Crop Breeding**

### *University of Saskatchewan, College of Agriculture and Bioresources - News Release (June 2014)*

The Crop Development Centre (CDC) and the Department of Plant Sciences, in the College of Agriculture and Bioresources, at the University of Saskatchewan are pleased to announce the appointment of Dr. Bill Biligetü as Assistant Professorship position in Forage Crop Breeding with the Crop Development Centre.

Dr. Biligetü completed a Bachelor of Science in Grassland Sciences and a M.Sc. in Rangeland Management from the Inner Mongolia Agriculture University, Inner Mongolia, China. He then moved to Saskatchewan and obtained his Ph.D in Perennial Forage Management and Physiology from the University of Saskatchewan.

To read the complete *U of S News Release*, [click here](#).

[Top of Page](#)

## Scouting for Weeds in Forage Stands

*Saskatchewan Ministry of Agriculture - Stay Connected (June 13, 2014)*

*By Sarah Sommerfeld, Regional Forage Specialist, Outlook, SK*

Adoption of weed management strategies for forage stands can be a valuable tool. Weeds often associated with forage stands are perennial and hard to control plants, such as Canada thistle, foxtail barley, dandelion, leafy spurge, absinthe wormwood, and common tansy. As weed infestations increase in size and severity, the cost of control increases and the production of desirable plants declines. A weed management plan begins with field scouting and identification.

Scouting for weeds in forage stands should occur regularly. Scouting helps to determine if undesirable plants are present. Scouting also identifies conditions that favour development of a weed infestation. Poor plant competition from desirable species, bare soil or any other type of soil disturbance can lead to a weed problem. If these conditions are present, the next step is to determine the cause.

To read the complete *SK Ministry of Ag Article*, [click here](#).

[Top of Page](#)

## SK PCAP Celebrates New Commitment

*Saskatchewan Prairie Conservation Action Plan (SK PCAP) - News Release (June 10, 2014)*

Since 1998 the Saskatchewan Prairie Conservation Action Plan Partnership has brought together native prairie stakeholder groups, including organizations representing producers, industry, provincial and federal governments, non-government organizations and research and educational institutions under a common vision for prairie conservation in Saskatchewan. The Partnership has evolved over its sixteen-year history and currently consists of 30 partner organizations. An initiative of the Saskatchewan Stock Growers Association (SSGA), SK PCAP maintains close ties to the ranching sector and the group is chaired by a member of the SSGA.

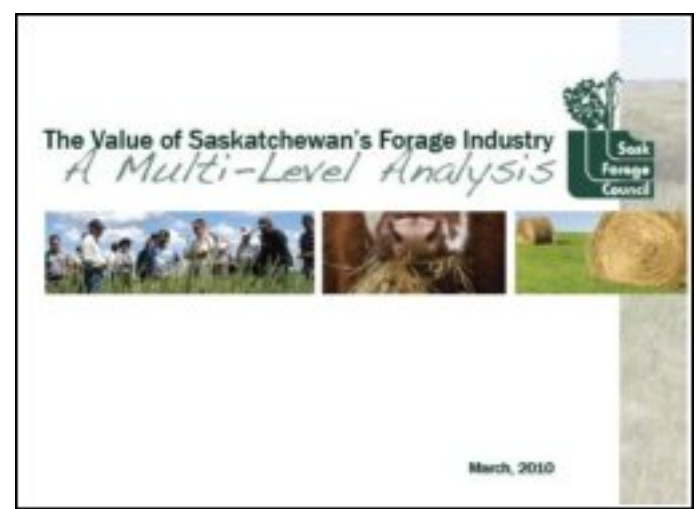
"Ranchers are stewards of the prairie, and not only concerned about grazing their livestock but also about maintaining clean water, providing wildlife habitat and conserving biodiversity," explains Orin Balas, rancher and current SK PCAP chair. "When you're a rancher, if you look after the land, the land will look after you, but well-managed prairie also provides ecosystem services for all of Saskatchewan," he continues.

To view the complete *SK PCAP News Release*, [click here](#).

[Top of Page](#)

## The Value of Saskatchewan's Forage Industry .....

To view the *Saskatchewan Forage Industry Analysis Report*, [click here](#).



[Top of Page](#)

## News and Upcoming Events

### **NPAW Prairie Parkland Chapter Annual Tour**

**June 19 & 20, 2014**

**Val Marie, SK**

This is the 16th Annual Society for Range Management - Prairie Parkland Chapter Annual Tour, and it is held in conjunction with Saskatchewan's 16th Annual **Native Prairie Appreciation Week** (NPAW, June 16-22, 2014). This two-day event is themed, "From Roots to Shoots" and focuses on involving the whole family. Kids ages 6-15 are welcome to come and participate, as well as everyone older. There are daycare options arranged for children under age 6. Please register by June 16th.

To view the event poster with agenda and registration details, [click here](#).

For more info, contact Nadia Mori at 306-946-3219 or [nadia.mori@gov.sk.ca](mailto:nadia.mori@gov.sk.ca).

---

### **Western Beef Development Centre Annual Field Day**

**June 24, 2014**

**Lanigan, SK**

The Annual Field Day will be held at the Termuende Research Ranch located near Lanigan, SK. Visit [www.wbdc.sk.ca](http://www.wbdc.sk.ca) for information to come.

For more information, contact Brenda at 306.682.3139.

---

### **2014 SFC Annual Tour & AGM**

**June 26, 2014**

**Lashburn, SK**

The Saskatchewan Forage Council (SFC) is hosting our 26th Annual General Meeting (AGM) & Tour. It will be held **near Lashburn, Saskatchewan** on **Thursday, June 26, 2014**. As in past years, we will be touring local sites and talking with producers about forage management issues and solutions on their operations. The AGM will follow the tour as well as presentation of the Forage Industry Innovation Award. Things will begin at 1:00pm at the Kerr Brothers Farm for the tour, followed by the AGM and supper. Registration is \$20/person and includes supper.

To view event details and the agenda, [click here](#).

For more info and to register, contact Leanne Thompson at 306.969.2666 or [office@saskforage.ca](mailto:office@saskforage.ca).

---

### **Saskatchewan Pasture Tour 2014**

**August 7, 2014**



## Yorkton/Touchwood Hills, SK

After 15 years, the Saskatchewan Pasture School will take on a new form. Jump on the bus for a one day, producer focused, in-the-field, pasture tour. Attendees will see forage research, demonstration projects and talk with producers who use an innovative approach to managing forages in their operations. Please register early as there is only room for 40 producers.

To view the event flyer, [click here](#).

To view the registration form and agenda, [click here](#).

For more information, contact the Saskatchewan Forage Council at 306.969.2666 or [office@saskforage.ca](mailto:office@saskforage.ca).

---

## International Rangeland Congress 2016

July 17-22, 2016

Saskatoon, SK

The future management of grazing lands in a high-tech world. Plan to join us! This all encompassing Congress will cover the Ecology, Management and Policy issues of all types of grazing lands around the world.

To view this event flyer, [click here](#).

**To view a recent announcement for this event, [click here](#).**

For more information, go to [www.irc2016canada.ca](http://www.irc2016canada.ca).

[Top of Page](#)

## Saskatchewan Forage Council Membership

### Be Sure Your Voice in the Forage Industry Counts!

- Incorporated under *The Co-operatives Act*, a membership fee for the SFC is a one-time cost of \$25.00;
- The SFC has worked in the province on behalf of **ALL** forage industry stakeholders (and that's a very extensive and diverse group) for more than 20 years;
- If you are involved with production, management, protection, harvesting, storage, utilization or marketing of forage products, the SFC wants your involvement and input;
- The SFC is committed to placing a focus and awareness on the importance of forages in our province.

*The SFC at a glance...*

With a mandate to enhance the province's forage and grassland industry, the Saskatchewan Forage Council (SFC) strives to partner with all sectors of the industry - producers, industry organizations and companies, government and university.

Formed in 1988, our objectives are focused on the development and dissemination of information related to the production and utilization of all forage resources, prioritization of forage research and collaboration with governments to develop and implement effective policies and programs as they relate to forage production and marketing.



**To learn more about becoming a member [Click Here](#).**



**Forage and Livestock eNews** is published by the Saskatchewan Forage Council (SFC). Opinions and information are provided by the authors and publication does not imply endorsement by the SFC.

**Financial support for the Forage and Livestock eNews has been provided in part by the Saskatchewan Forage Seed Development Commission.**



We welcome questions about article submission or to find out more about sponsorship, please contact the Saskatchewan Forage Council at:

Email: [office@saskforage.ca](mailto:office@saskforage.ca)

Phone: 306.969.2666

**The Saskatchewan Forage Council Gratefully Acknowledges funding for our 'Facilitating Forage Initiatives in Saskatchewan' project through the Saskatchewan Cattlemen's Association Saskatchewan Beef Industry Development Fund:**



**The Saskatchewan Forage Council recognizes our Annual Supporters:**





**[Forward email](#)**



This email was sent to coyschellenberg@gmail.com by [office@saskforage.ca](mailto:office@saskforage.ca) | [Update Profile/Email Address](#) | Instant removal with [SafeUnsubscribe™](#) | [Privacy Policy](#).



Saskatchewan Forage Council | PO Box 87 | Ceylon | SK | S0C 0T0 | Canada