



Forage and Livestock eNews

Updates and information from across the industry

February 23, 2016 - Vol 8, Issue 2

Articles In This Issue

Control of Absinth and
Common Tansy

Saskatchewan's Stewardship
Journey

Forage Seed Response to
Copper Fertilization

Diary Silage Feed Research

Resilient Cow-Calf Production
Systems

Online Calculators

The Value of Saskatchewan's
Forage Industry

Upcoming Events

Become a Saskatchewan
Forage Council Member

[Join Our Mailing List!](#)

Quick Links

[Saskatchewan Forage Council](#)

Greetings!

February brings us the second edition of the Forage and Livestock eNews for 2016. In many parts of the province there has been warm weather and melting snow, making us think of spring and all that comes with it. As you prepare for the upcoming forage season, keep in mind that March 31 is the deadline to apply for forage insurance from Saskatchewan Crop Insurance. If you'd like to know more, [click here](#) to visit the SCIC website.

The February 2016 eNews includes information on dairy and forage research in Saskatchewan, building capacity for resilient cow-calf systems and a link to a new web video that shares information on a project that the SFC and partners are undertaking. Read on to learn more and don't forget to check out the events section at the end of

the eNews-there is lots going on in Saskatchewan in February and March! The Beef Cattle Research Council (BCRC) has upcoming



[Forage Industry News](#)

[Upcoming Events](#)

webinars that will be of interest to forage producers. There is still time to register for the February 24th webinar [Practical Applications of Forage Rejuvenation](#). To see more BCRC webinar topics, [click here](#).

Please feel free to forward the eNews on to others you think may be interested in forage and livestock industry updates -signing up is as easy as clicking the 'Join Our Mailing List!' on the left. We always appreciate your feedback, event listings or article suggestions.

Your *Forage and Livestock eNews* Editor,
Laura Hoimyr

Control of Absinth and Common Tansy in Perennial Pasture Using Weed Wiper Application

Saskatchewan Forage Council (SFC) ADOPT Project Update

The Saskatchewan Forage Council, in partnership with the Saskatchewan Ministry of Agriculture and Ducks Unlimited, is undertaking a project to demonstrate the effects of weed wiper applicators on absinth and common tansy on perennial pastures. In 2015, glyphosate herbicide was applied at six sites (three absinth and three tansy sites) using two weed wiper applicators: a rotating steel drum-type applicator and a wick applicator. Sites were then observed one month and three months after herbicide application and the effects on the weed and the surrounding desirable vegetation were noted. This project will continue with a follow-up assessment in 2016 and the final report will be posted on the SFC website.

A short web video has been produced to share the project results to date. To view the video, [click here](#).

The January 2016 edition of the AgriView publication includes an article by Saskatchewan Agriculture Regional Forage Specialist John Hauer titled "*Using Weed Wipers to Control Pasture Weeds*". [Click here](#) to navigate to the AgriView and read this article.



Image: Steel drum roller applicator wiping weeds

[Top of Page](#)

Saskatchewan's Stewardship Journey

Farmers and ranchers work to protect the environment. By adopting new production practices and technologies, and always trying to improve on old ones, they have made sustainability a priority for more than 100 years. The story of Saskatchewan's stewardship journey is worth sharing - take a look.

[Click here](#) to view the video "Saskatchewan's Stewardship Journey" and the Saskatchewan Agriculture website.

[Top of Page](#)

Forage Seed Response to Copper Fertilization 2013-2015 Report

By: Stewart Brandt, Northeast Agriculture Research Foundation

Copper is an essential micronutrient needed for proper fertilization and seed formation. Copper deficiencies are not widespread in Northeastern Saskatchewan, but where they occur they can result in very substantial yield losses to susceptible grain crops. Deficiencies are most common on organic (peat) and coarse textured (sandy) soils. Deficiency symptoms can include yellowing and curling of young leaves, pig-tailing (curling) of leaf tips, delayed heading, aborted heads or spikelets, stem or head bending or browning of stems and heads.

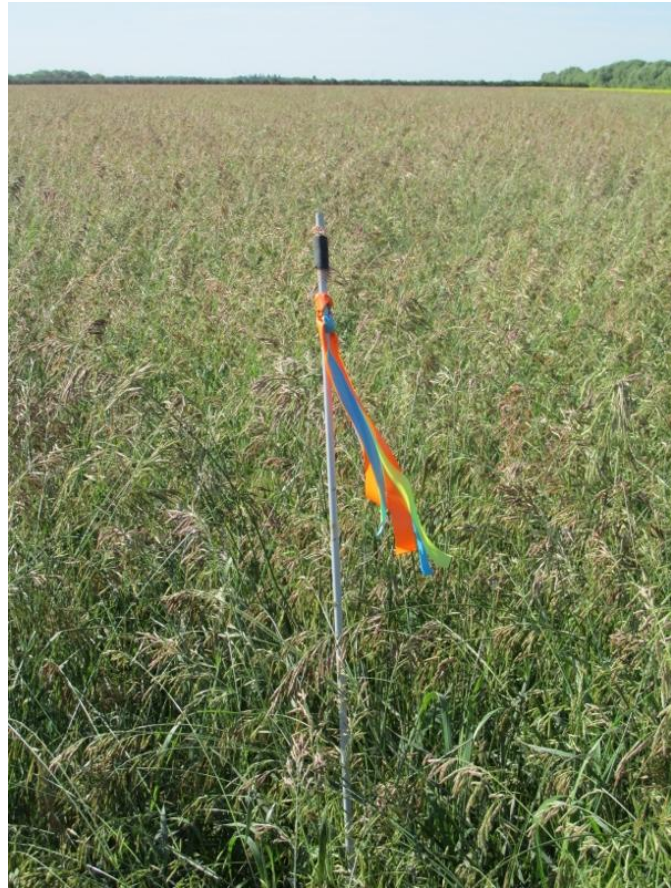
June 2013, we selected 4 sites in the Choiceland, Nipawin, White Fox, SK regions where there was evidence of copper deficiency. Sites were those on soils where copper deficiencies could typically occur, and where previous yields were below expectations. None of the sites showed typical symptoms of severe copper deficiency like pig-tailing of leaves, late tillering or very poor growth. All sites were on sandy soils with moderate organic matter. Three sites were established Timothy, and one was established Hybrid bromegrass. At each site we located 5 pairs of 0.18 m² mini-plots. At the late flag leaf stage, we applied foliar EDTA chelated copper solution at a rate of 0.22 lb/ac in 40 gallons per acre (gpa) of water to one of each pair of mini-plots. The remaining plots were left untreated.

In 2014 and 2015, we used three of the same sites as in 2013, but dropped site 1 from 2013 and added a site at Carrot River. The 2014 and 2015 protocol was the same as for 2013, but we added 2 more foliar copper treatments; one with a Nexus Liquid Copper 5% product applied to supply 0.22 lb/ac Cu in 40 gpa of water and the second with a YARA product called Coptrac 500 also applied at a rate that supplied 0.22 lb/ac of Cu.

At maturity, all mini-plots were harvested by cutting forage near the soil surface and bagging each. After drying, the seed was stripped from the straw and cleaned to remove non-seed material. The clean seed and straw were weighed separately.

Results from 2013 to 2015 suggest that copper can be a factor in low yields of established Timothy and Hybrid bromegrass grown for seed. Results also confirm that application of foliar copper at relatively low rates (0.22 lb/ac) can be effective at correcting deficiencies. Results also confirm that applying foliar copper to mini-plots and comparing yield to adjacent untreated

areas is an effective way of identifying where copper applications may be economical. What is troubling is that responses on the same fields vary from year to year, making it difficult to predict when Cu responses can be anticipated. Considering the low cost of foliar Cu fertilization and the relatively large responses to foliar Cu, it may be a useful practice to apply foliar Cu to all forage grass seed fields where the crop is grown on light textured soils with limited capacity to supply Cu. The question that remains is whether we can develop a reliable predictor or threshold for soil or tissue Cu to be used to assess the need for foliar Cu.



The Northeast Agriculture Research Foundation would like to express their gratitude to the Saskatchewan Forage Seed Development Commission (SFSDC), along with Nexus Ag Business Inc. and YARA Canada Inc. for financial support for this project and for providing Cu product. In

addition, the support of Darwin Leach, Karen Strukoff and Kerry O'Brien for technical assistance and of Clayton Myhre (DLF-Pickseed) in finding suitable sites and assisting with timing of operations is acknowledged.

The full project report is located on the SFSDC website at www.skforageseeddc.com under Research: Past Research.

Image: Copper fertilizer mini-plot in hybrid bromegrass. Nipawin, SK. Source: SFSDC

[Top of Page](#)

New Dairy Silage Feed Research and Milk Production Performance Study

Update from Sask Ministry of Agriculture Strategic Research Chair in Feed R&D Program

Author: Dr. Peiqiang Yu, Ministry of Agriculture Strategic Research Chair in Feed R&D, Department of Animal and Poultry Science, College of Agriculture and Bioresources, University of Saskatchewan

The annual dairy producers and the dairy industry "Fifth Annual Dairy Info Day" was successfully held on January 28, 2016. Dairy producers, feed industry representatives,

nutritionists and researchers came together to share research findings and recommendations in recent research.

During this meeting, one of the Saskatchewan Ministry of Agriculture Strategic Research Chair in Feed R&D Programs (Dr. Peiqiang Yu) presented with his team member, PhD student, Basim Refat, MSc from Spain. The presentation title was "Effect of Digestible Fibre Content of Barley Silage on Feed Intake, Feeding Behaviour and Milk Production of Lactating Dairy Cows in Comparison with New Corn Silage". This project is being carried out in collaboration with several researchers (including Dave Christensen and John McKinnon), dairy industry nutritionists (eg. Leland Fuhr) and SaskMilk industry (eg. Jack Ford). Three different barley silage varieties (CDC cowboy silage, CDC Copeland silage, Xene barley silage) and one new corn variety (P7213R) were compared in dairy production performance. The new corn variety was the best variety that was selected based on findings from previous Agriculture Development Fund (ADF) funded forage corn variety study with principal investigator, Dr. Peiqiang Yu, Sask Ministry of Agriculture Strategic Research Chair in Feed R&D.

The detailed results for various parameters have been reported. In summary, this project indicated that feeding barley silage with 3.6 to 5.7% higher in vitro NDF digestibility does not necessarily correspond with increased dairy cow performance and feeding behaviour. However, feeding the new corn variety silage has the potential to produce more milk with improved feed efficiency compared with the barley silages. An upcoming study is planned to assess dairy performance trails when feeding silage with much greater in vitro NDF/DM digestibility through adding optimal feed additive to determine whether it corresponds with greater dairy cow performance.

This project has been supported by Sask. Ministry of Agriculture Strategic Research Chair (Dr. Yu): Feed Research & Development, ADF fund-2014-0281, SaskMilk, WGRF fund-PROJ344546 and Sask Forage Network (SNK, in term of graduate scholarship award).

[Top of Page](#)

Building Long-Term Capacity for Resilient Cow-Calf Production Systems

Project funded by Beef Cattle Research Council

What are we doing?

Evaluating stockpiled perennial and annual forages to fill knowledge gaps in forage and beef



What is involved?

- Small plot assessment of perennial and annual forages
- Fall/winter grazing study with dry beef cows
- Economic analysis of extended grazing of stockpiled forages

Who is involved?

- University of Manitoba
- Western Beef Development Centre
- University of Saskatchewan
- Manitoba Agriculture Food and Rural Development (MAFRD)
- Manitoba Beef Producers (MBP)

Perennial forages*

Killarney Orchardgrass; Courtenay Tall Fescue; Success Hybrid Brome; Fleet Meadowbrome; Armada Meadowbrome; Algonquin Alfalfa; Yellowhead Alfalfa; Oxley II Cicer Milkvetch

*Early vs Late Stockpiling

Experimental Sites

Carman, MB; Roblin, MB; Arborg, MB; Lanigan, SK; Saskatoon, SK

Annual forages

Fusion Corn; Golden German Foxtail Millet; Haymaker Oats; Hazlet Fall Rye; Maverick Barley; Aubade Westerwold; Mammoth Soybeans

2016 - 2017: Fall/winter grazing study

- Assessment of forage utilization by dry beef cows
- Four stockpiled forage treatments
- Evaluation of animal performance during overwintering

2016 - 2018: Economic analysis of stockpiled grazing

- Net return on investment
- Comparison to conventional/standard overwintering system
- Variation in returns using standard risk analysis tools

To read the Extended Grazing Factsheet (pdf), [click here](#).

To visit the BCRC website page to learn more, [click here](#).

[Top of Page](#)

Farming and Agricultural Online Calculators

Have you checked out the new Saskatchewan Agriculture [website](#)? It is a great resource for new producers hoping to get started in agriculture or for existing producers to gain knowledge and get updates on new research, events and projects in Saskatchewan.

The farming and agricultural online calculators page includes spreadsheets to help you out with managing bale grazing, cattle feeding, crop residue, feed value, grain silage, land rent and more.

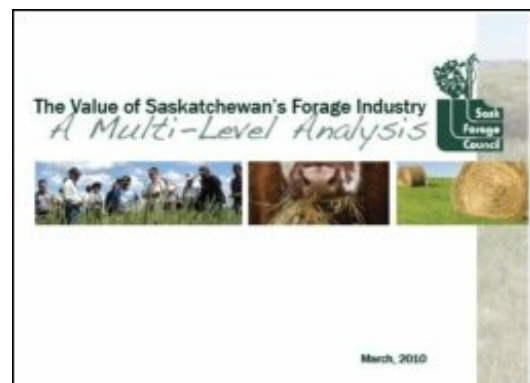
To visit the online calculators page, [click here](#).

[Top of Page](#)

The Value of Saskatchewan's Forage Industry

"The Saskatchewan Forage Seed Development Commission (SFSDC) was established in July of 2005. The purpose of the SFSDC is to perform research and development for the benefit of the forage seed industry, through collection of a refundable levy (0.75% of gross value)."

To view the *Saskatchewan Forage Industry Analysis* Report, [click here](#).



[Top of Page](#)

Upcoming Events

Celebrating Rural Ranching Women

February 26, 2016

Maple Creek, SK

An event to celebrate rural women in association with the Rural Women Month(March). Topics include entrepreneurship, marketing and management,livestock and forage management, health and wellness. Cost is \$40 and included lunch.

To register contact the Agriculture Knowledge Centre at 1-866-457-2377.

Real Dirt on Farming Speakers Training

March 11, 2016

Swift Current, SK

A day-long presentation skills workshop for farmers and agri-food industry professionals interested in learning how to give effective presentations on farm topics including: Canadian Farming 101; Farming Myths; Farming and the Environment; Food and Farming and Animal Care on the Farm.

For more information or to register, [click here](#).

Saskatchewan Horse Federation AGM

March 12, 2016

Swift Current, SK

The Saskatchewan Horse Federation Annual General Meeting will take place March 12 at Kinetic Park Pallisade Pavillion in Swift Current.

For more information contact Pam Duckworth at 306.780.9244 or pamduckworth@saskhorse.ca or visit the [website](#).

Soils and Crops

March 15 and 16, 2016

Saskatoon, SK

[Register](#) for this event taking place at Prairieland Park in March 2016. This two-day workshop will focus on the latest research in the field of agriculture on the first day and presentations focusing on pests and pulses to celebrate the 2016 International Year of the Pulse!

For more information, visit www.usask.ca/soilscrops

NPAW 2016

June 16 and 17, 2016

TBA

Save the date for the meeting and field tour held in conjunction with Saskatchewan's 18th Annual Native Prairie Awareness Week! The theme for 2016 is "Blues, Bats and Blue Grama". To view the poster, [click here](#). Watch for upcoming details at www.pcap-sk.org/NPAW.

International Rangeland Congress 2016

July 17-22, 2016

Saskatoon, SK

The future management of grazing lands in a high-tech world. Plan to join us! This all encompassing Congress will cover the Ecology, Management and Policy issues of all types of grazing lands around the world.

Event Registration is now open! [Click here](#) to register online today.

For more information, go to www.irc2016canada.ca.

[Top of Page](#)

Saskatchewan Forage Council Membership

Be Sure Your Voice in the Forage Industry Counts!

- Incorporated under *The Co-operatives Act*, a membership fee for the SFC is a one-time cost of \$25.00;
- The SFC has worked in the province on behalf of **ALL** forage industry stakeholders (and that's a very extensive and diverse group) for more than 20 years;
- If you are involved with production, management, protection, harvesting, storage, utilization or marketing of forage products, the SFC wants your involvement and input;
- The SFC is committed to placing a focus and awareness on the importance of forages in our province.

The SFC at a glance...

With a mandate to enhance the province's forage and grassland industry, the Saskatchewan Forage Council (SFC) strives to partner with all sectors of the industry - producers, industry organizations and companies, government and university.

Formed in 1988, our objectives are focused on the development and dissemination of information related to the production and utilization of all forage resources, prioritization of forage research and collaboration with governments to develop and implement effective policies and programs as they relate to forage production and marketing.



To learn more about becoming a member [Click Here](#).

[Top of Page](#)



Forage and Livestock eNews is published by the Saskatchewan Forage Council (SFC). Opinions and information are provided by the authors and publication does not imply endorsement by the SFC.

Financial support for the Forage and Livestock eNews has been provided in part by the Saskatchewan Forage Seed Development Commission.



We welcome questions about article submission or to find out more about sponsorship, please contact the Saskatchewan Forage Council at:

The Saskatchewan Forage Council Gratefully Acknowledges funding for our 'Facilitating Forage Initiatives in Saskatchewan' project through the Saskatchewan Cattlemen's Association Saskatchewan Beef Industry

Development Fund:



The Saskatchewan Forage Council recognizes our Annual Supporters:



